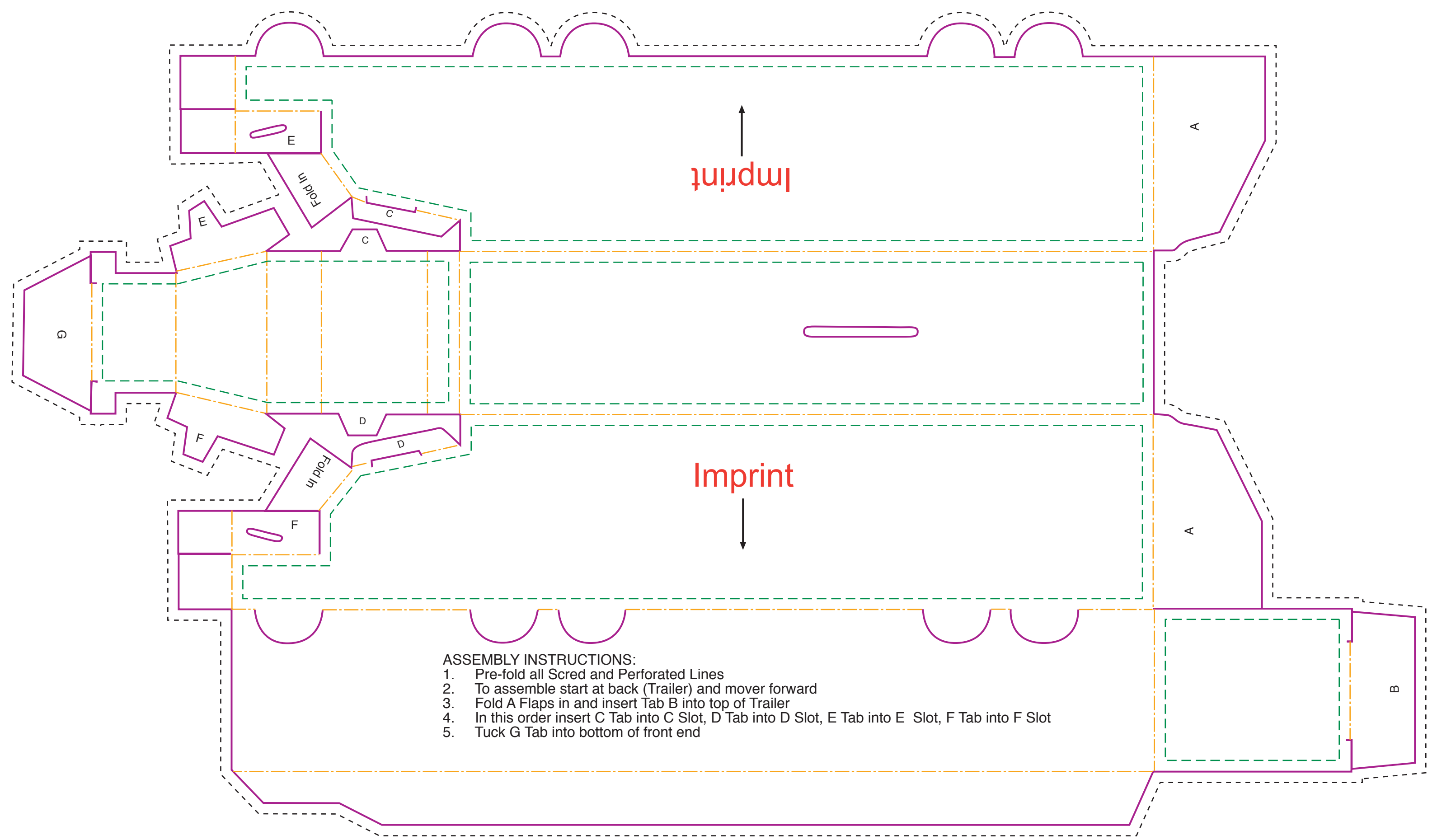


Actual size
 Width: 16 in.
 Height: 9.25 in.

N21
Semi Truck Bank

- **Bleed Line**
 (1/8" offset from Die Line)
- **Die Line**
 (represents actual cut product)
- - - - **Live Area**
 (3/16" inset from Die Line)
- · - · **Fold**



- ASSEMBLY INSTRUCTIONS:**
1. Pre-fold all Scred and Perforated Lines
 2. To assemble start at back (Trailer) and mover forward
 3. Fold A Flaps in and insert Tab B into top of Trailer
 4. In this order insert C Tab into C Slot, D Tab into D Slot, E Tab into E Slot, F Tab into F Slot
 5. Tuck G Tab into bottom of front end

Please keep all text and graphics inside the Live Area unless the graphic element is intended to bleed. Borders, if included, should bleed outward from the Live Area.
 Please model spot colors using the Pantone solid coated Matching System
 Please submit all Fonts and Links for output with your Final Composite.